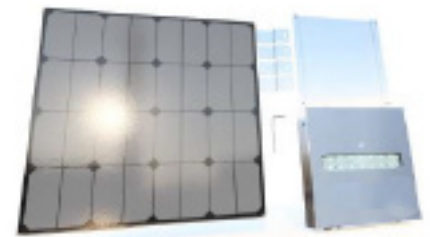


7W / 15W

187 LM/W (MAX)

K811 Single Solar Light Kit

Provide a safer, well-lit environment for your community



Our solar light kit is a modular, LED lighting system with split panel and light designed to illuminate under shelters using solar power.

Built to withstand the toughest environments, the 316 grade stainless steel exterior shell and toughened glass lens is highly vandal resistant and can be used in numerous applications. It is easy to install with a compact integrated battery making it a cost saving lighting solution.

7W / 15W

187 LM/W (MAX)



PASSIVE INFRA RED MOTION DETECTION



UP TO 54 HOURS

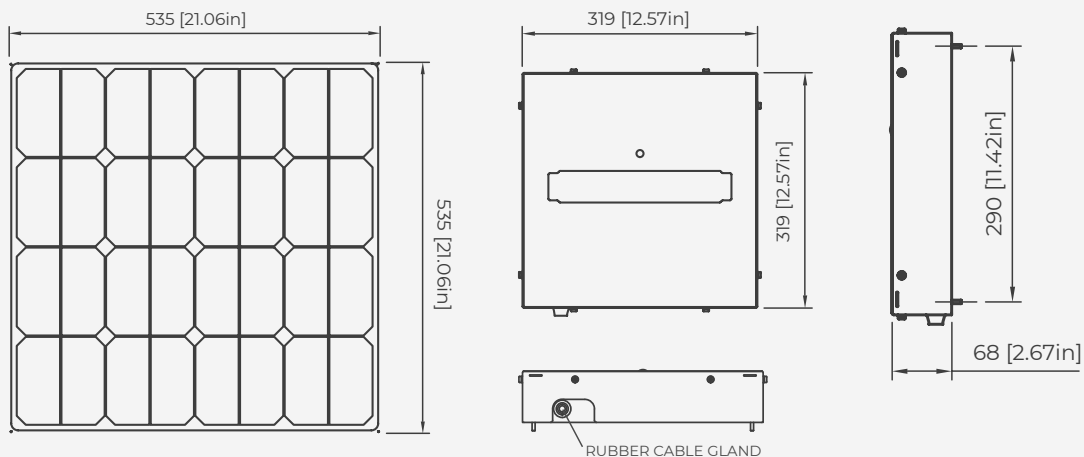


VANDAL RESISTANT



5 YR UNIT WARRANTY

Product Dimensions



K811 Single Solar Light Kit



PRODUCT SPECIFICATIONS

| Operating control / operation modes | |
|--|---|
| 1. All Night Mode | Operates at a constant all night level of illumination until dawn |
| 2. Sensor Mode | Detects movement and increases illumination up to 100% until no motion is detected for 30 seconds. |
| 3. Surprise Mode | No light until motion is detected then turns on until no motion is detected for 30 seconds. |
| * Configurable TIMER settings for ON / OFF / DIM are available upon request. | |
| LED | |
| Type | CREE XP-G LED |
| Watts (Light Output) | 15W (Boost Mode) / 7.5W (Normal Operation) |
| Lumens | 187 lm/W (Max.) |
| CCT (Colour Temperature) | 4000K (Standard) / 3000K (Optional) |
| Motion Sensor (PIR) | 6m / 20" detection zone (360°) Activates for 30 seconds |
| Optics | T3 (Standard) 135° x 85° T5 (Optional) 110° x 135° |
| Battery | |
| Autonomy | 54 hours (4.5 nights)* |
| Battery Type / Capacity | LiFePo4 12.8v 32Ah (409.6Wh) |
| Solar Panel | |
| Watts (p) / Type | 65W N type monocrystalline with edgeless frame design |
| Efficiency | 24% |
| Unit | |
| Material | Heavy duty IP65 316 grade stainless steel exterior shell & solar panel support frame |
| Product Dimensions | Panel assembly: L535 x W535 x H20 / L24.4" x W24.4" x H0.8" Fixture: 320mmL x 320mmW x 80mmH / 12.6"L x 12.6"W x 3.1"H |
| Package Dimensions | Boxed panel: L620 x W620 x H100 / L24.4" x W24.4" x H4" Boxed fixture: L400 x W400 x H120 / L15.7" x W15.7" x H4.7" |
| Package Weight | Complete unit: 19.5 kg / 43 lb |
| Sail Area / EPA | 0.1146 m ² / 1.2333 FT ² |
| Environmental | |
| Operating Temp. Range | -20°C to 70°C / -4°F to 158°F |
| IP Rating | IP65 |
| Impact Rating | IK10 |
| Wind rating (up to) | 318kmph / 198mph |
| Warranty | |
| Warranty Period | 10 years (Battery)* / 5 years (Unit) / 25 years (Solar Panel) |