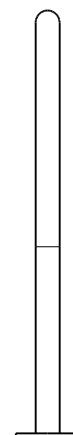
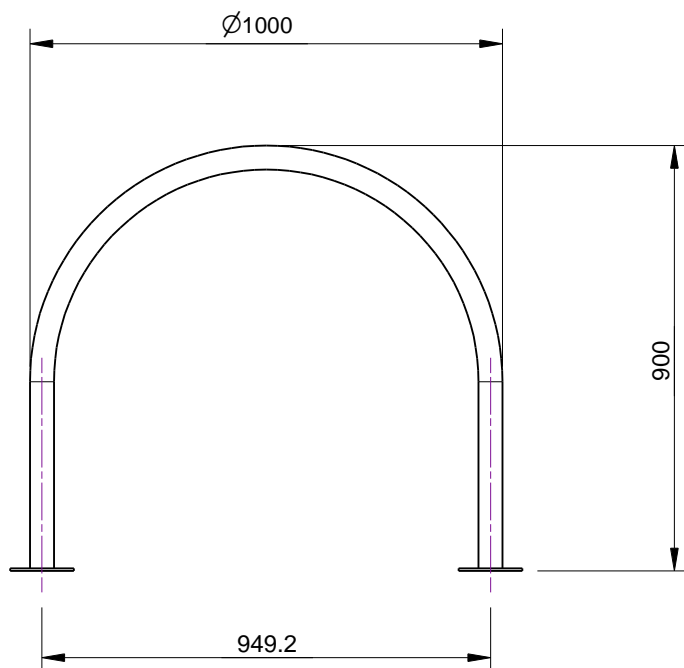
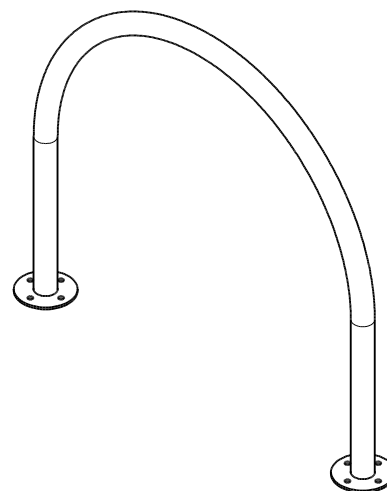
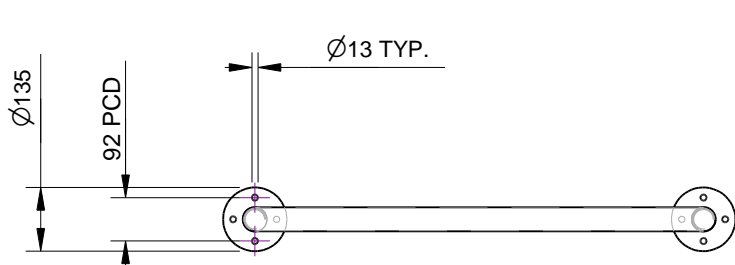




Quality
ISO 9001
SAI GLOBAL



SPECIFICATION:

MATERIAL:

Rolled Tube: Stainless Steel 50.8OD 304 Grade
Base Plates: 5mm Stainless Steel 304 Grade

DIMENSIONS:

mm unless otherwise stated

FINISH:


Stainless steel components - Polished

GROUND ATTACHEMENT:

Bolt down

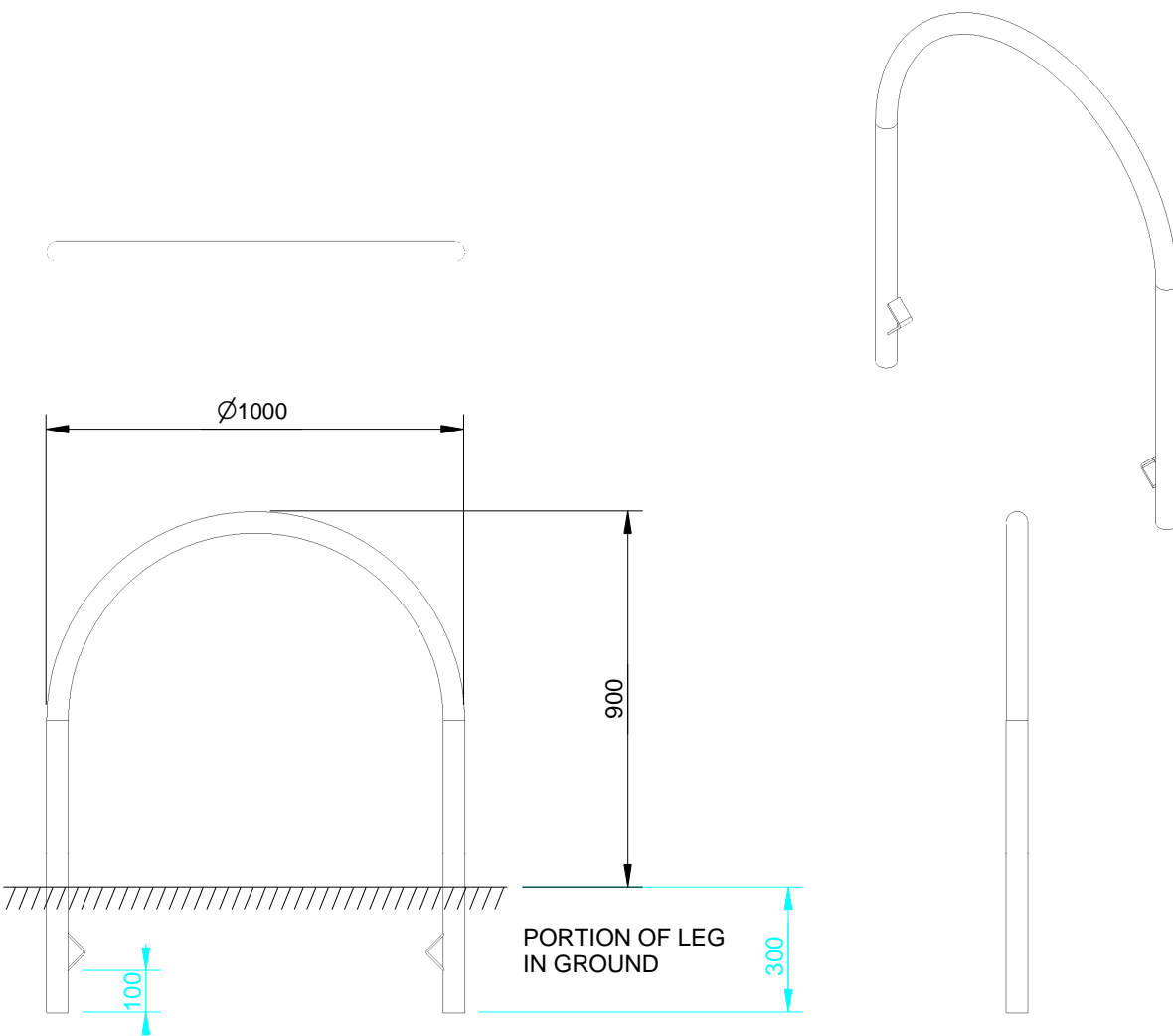


CONFIDENTIAL

| REVISION # | DESCRIPTION | BY | DATE | DRAWN | DRAWN DATE | CHECKED | CHECKED DATE | SCALE | A4 |
|------------|---------------------|-----|---------|-----------|------------|---|--------------|--|--------------|
| | | | | | | | | N/A | |
| 1 | ORIGINAL DRAWING | SJ | 12.5.10 | R.CRIGTON | 6.2.14 | | | | |
| 2 | FULL PRODUCT REVIEW | RBC | 6.2.14 | | | | | | |
| 3 | | | | | | | | | |
| 4 | | | | | | | | | |
| 5 | | | | | | | | | |
| | | | | | |  | | SINGLE BIKE RACK 304SS - BOLT DOWN SPEC. | |
| | | | | | | | FFSC010001 | REV. 2 | SHEET 1 OF 2 |



Quality
ISO 9001
SAI GLOBAL



SPECIFICATION:

MATERIAL:

Rolled Tube: Stainless Steel 50.8OD 304 Grade
Inground Lugs: 40x5mm Flat Bar 304 Stainless Steel

DIMENSIONS:

mm unless otherwise stated

FINISH:

Stainless steel components - Polished

GROUND ATTACHEMENT:

In ground



copyright

CONFIDENTIAL

| REVISION # | DESCRIPTION | BY | DATE | DRAWN | DRAWN DATE | CHECKED | CHECKED DATE | SCALE | A4 |
|------------|---------------------|-----|--------|-------|------------|--|--------------|--------------|----|
| | | | | | | | | | |
| 2 | FULL PRODUCT REVIEW | RBC | 7.2.14 | | | SINGLE BIKE RACK 304SS - IN GROUND SPEC. | | | |
| 3 | | | | | | | | | |
| 4 | | | | | | | | | |
| 5 | | | | | | | | | |
| | | | | | | | | | |
| | | | | | | FFSC010002 | REV. 2 | SHEET 1 OF 2 | |

SPECIFICATION:

MATERIAL:

Stainless steel unless otherwise stated
(304 with an option of 316)

DIMENSIONS:

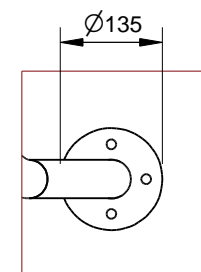
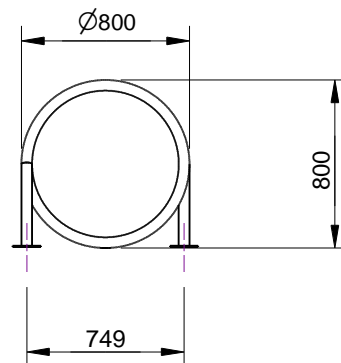
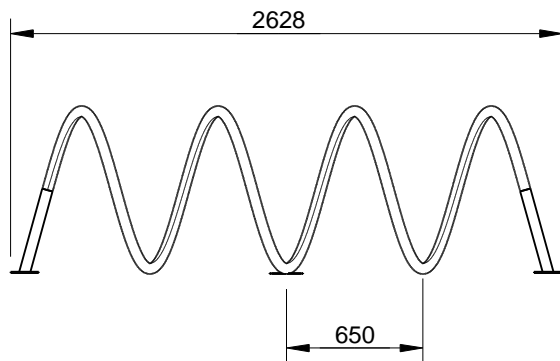
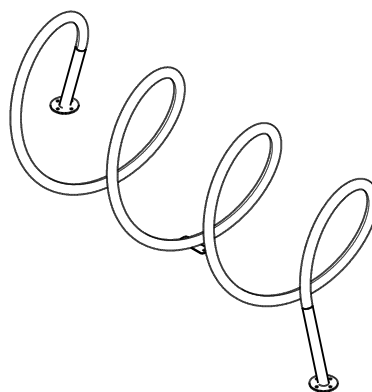
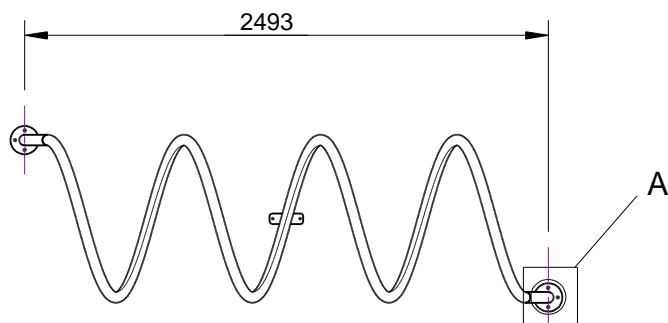
mm unless otherwise stated

FINISH:

Stainless steel components - Polished

GROUND ATTACHEMENT:

Bolt down

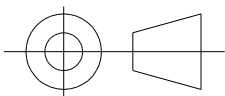


Detail A

© copyright

CONFIDENTIAL

| REVISION # | DESCRIPTION | BY | DATE | DRAWN | DRAWN DATE | CHECKED | CHECKED DATE | SCALE | |
|------------|---------------------|-----|---------|-----------|------------|------------|--------------|---|--------------|
| | | | | | | | | A4 | |
| 1 | ORIGINAL DRAWING | DN | 30.9.10 | R.CRIGTON | 7.2.14 | | | N/A | |
| 2 | FULL PRODUCT REVIEW | RBC | 7.2.14 | | | | | SPIRAL BIKE RACK (4 BAYS) - BOLT DOWN SPEC. | |
| 3 | | | | | | | | | |
| 4 | | | | | | | | | |
| 5 | | | | | | | | | |
| | | | | | | FFSC010005 | | REV. 2 | SHEET 1 OF 1 |





Quality
ISO 9001
SAI GLOBAL

SPECIFICATION:

MATERIAL:

Stainless steel unless otherwise stated
(304 with an option of 316)

DIMENSIONS:

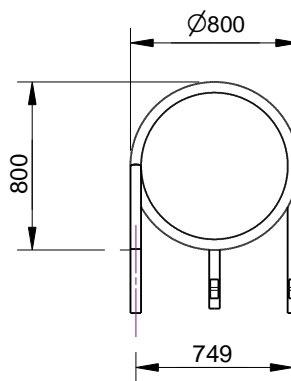
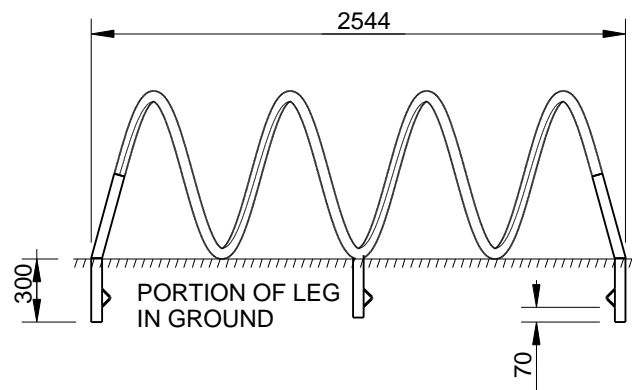
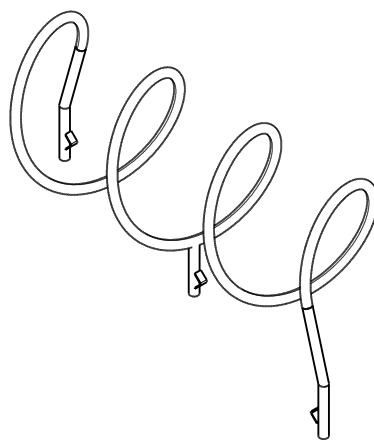
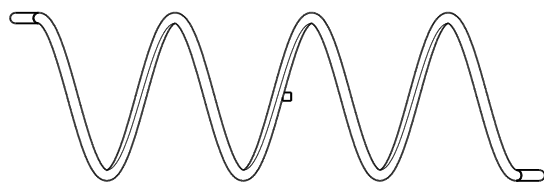
mm unless otherwise stated

FINISH:

Stainless steel components - Polished

GROUND ATTACHEMENT:

Bolt down



© copyright
CONFIDENTIAL

| REVISION | # | DESCRIPTION | BY | DATE | DRAWN | DRAWN DATE | CHECKED | CHECKED DATE | SCALE | A4 |
|----------|---------------------|------------------|--------|---------|-----------|------------|---------|--------------|-------|----|
| | 1 | ORIGINAL DRAWING | DN | 30.9.10 | R.CRIGTON | 7.2.14 | | | N/A | |
| 2 | FULL PRODUCT REVIEW | RBC | 7.2.14 | | | | | | | |
| 3 | | | | | | | | | | |
| 4 | | | | | | | | | | |
| 5 | | | | | | | | | | |

SPIRAL BIKE RACK (4 BAYS) - IN GROUND SPEC.

FFSC010006

REV. 2

SHEET 1 OF 1